



Ronald McDonald  
House Charities®  
Alabama

Keeping families close™

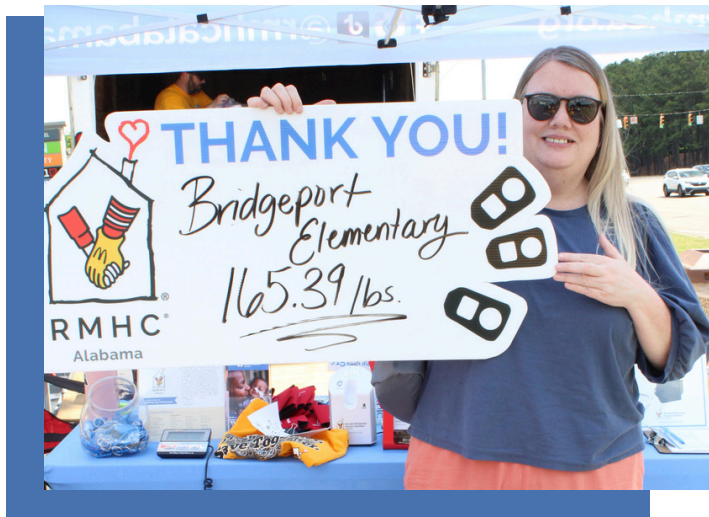


# POP TAB PANDEMONIUM Starter Kit





# Welcome



We are so excited for your participation in this year's Pop Tab Pandemonium contest! This year, thanks to your dedication, we know the contest will be bigger and better than ever before. No matter the size of your school's or community organization's pop tab donation, please know that your support is making a BIG difference in the lives of families at the Ronald McDonald House. It's because of supporters like you that we are able to keep families together when they need each other the most.

In this packet, you will find all the information you need to get your school or community organization started with collecting pop tabs! We have made this process as easy as possible for you. Printing materials and other classroom resources are available for download on our website ([www.rmhca.org/poptab](http://www.rmhca.org/poptab)). Please use these resources to help spread the word about the contest to your faculty, staff, group members, students, and parents!

Sincerely,

Ella Portwood

RMHCA Communications Manager | [www.RMHCA.org](http://www.RMHCA.org)

o:205-638-7269 c:205-520-4266 | [ella.portwood@rmhca.org](mailto:ella.portwood@rmhca.org)

1700 4<sup>th</sup> Avenue South Birmingham, AL 35233-1810



# Table of Contents

---

Why Pop Tabs? .....	3
Resources Provided .....	4
Getting Your School Involved .....	5
Collecting & Saving Pop Tabs .....	6
Contest Winners .....	6
Pop Tab Parties .....	7
Other Ways to Give Back .....	8
FAQs .....	9





# Why Pop Tabs?



## WHAT CAN A TEENY TINY POP TAB DO?

Ronald McDonald House Charities of Alabama receives money from recycling aluminum tabs. Our local recycling partner, SA Recycling, processes the tabs and pays us the going-rate for each pound of aluminum, which is approximately \$0.70/lb. This money is used to fund our mission. We also partner with local recycling companies at our end-of-the-year Pop Tab Parties. We are so thankful for all of the communities who make Pop Tab Pandemonium a success!

By participating in Pop Tab Pandemonium, you are able to...



**Raise  
awareness**



**Make new  
friends**



**Raise  
money**



**Protect the  
environment**



**Provide a "home-away-from-home" for more than  
2,000 families each year**



**No matter how small you start, start something that matters.**





# Resources Provided

Printing materials and other classroom resources are available for download by clicking the links or on our website: ([www.rmhca.org/poptab](http://www.rmhca.org/poptab))

---



## **Teacher Letter**

We have created a letter for you to distribute to other teachers in your school, encouraging them to spread the word about Pop Tab Pandemonium and to encourage participation from their students.



## **Parent Letter**

Similar to the teacher letter, this letter is designed for students to take home to their parents. This letter informs parents of your school's participation in the contest.



## **Community Letter**

This letter is designed for members of community groups to take home to their community members. This letter informs them of your organization's participation in the contest.



## **Teaching Materials**

More to come!



## **Flyers**

We have created several flyers appropriate for year-round use. These can be posted around your school, organization, or community group to promote the pop tab contest! The flyers are designed to remind and encourage participation throughout the entire year. We have included a blank space on each flyer for you to fill in with the drop-off location for pop tabs.



## **Collection Bin Flyer**

Use this flyer to identify your collection bin so that everyone knows where to drop off their pop tabs.



## **Stickers**

Participants earn stickers when they donate pop tabs! Stickers can make donating pop tabs fun and engaging. These stickers are compatible with Avery 5395 labels.



## **Certificates**

While RMHCA will award a trophy to the category winners, we want you to have the opportunity to show appreciation to your participants and their individual contributions in a personal way. Use the certificates we have included to recognize your pop tab STAR participants! Every participant in the contest is important and appreciated.

# Getting Involved

One successful way to encourage everyone to get involved in Pop Tab Pandemonium is by hosting competitions within your school, organization, or community group. Below are a few suggestions for different types of competitions you can host:

## COMPETITION IDEAS:

- Class, Grade, or Club Competition
- Rivalry Competition
- Best Bin Competition
- Top-Collector Competition
- Organization-Wide Drive
- Theme Day
- Sponsored Prize



Over time, we have noticed that groups with the highest collection of pop tabs often provide incentives for their participants to collect and donate tabs. Whether you are a faculty member, staff member, or community leader, you understand that participants are more likely to engage in a contest if prizes are presented to the winners. By creating competitions with prizes, you provide a positive incentive for everyone to get on board with Pop Tab Pandemonium! Here are some ideas we have come up with to encourage participation, but feel free to brainstorm and create your own:

## You Can Have a . . .

Pizza Party

Ice Cream Social

Popcorn & Movie Afternoon

Extra Recess

Theme Day

T-shirt Day (great for schools with uniforms!)

Recognition in Your School's or groups Newspaper/Newsletter

Along with Many, Many More!



# Collecting & Saving Pop Tabs

## WHAT TO BRING YOUR POP TABS IN:

- ✓ Boxes
- ✓ Storage bins
- ✓ Paper bags
- ✓ Resealable Ziploc bags

## WHAT **NOT** TO BRING YOUR POP TABS IN:

- ✗ Jars
- ✗ Soda bottles
- ✗ Milk jugs
- ✗ Plastic grocery bags

## Contest Winners

### OVERALL WINNER

Once the Pop Tab Parties are completed, the overall winning school will be determined by the largest number of pop tabs collected per student enrolled. So . . . pounds of pop tabs ÷ size of the student body = Pop Tab Pandemonium Winner! The winning school is not determined solely by the total amount of pop tabs collected. We also take into account the number of pop tabs collected in relation to the size of the student body. The overall winner will receive:

- Possession of the Trophy for 1 year
- Recognition on RMHCA's website + social media pages
- Plaque
- Additional prizes (upon availability)

### CATEGORY WINNERS

Once Pop Tab Parties are completed, there will be one school nominated as the winner for each category. The category winners will be determined by the largest number of pop tabs collected per student enrolled in the school (same as the overall winner above). The categories will be Elementary, Middle, Private, and High School.

In addition to the school categories, there will be a Community Award given to the top community group with the most pop tabs collected. This award is specifically for non-school organizations and community groups. The category winners will receive:

- Recognition on RMHCA's website + social media pages
- Small plaque



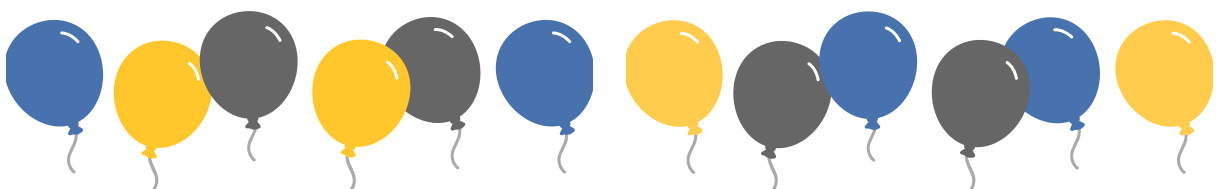
# Pop Tab Parties!

We are so excited to host Pop Tab Parties again this year! Pop Tab Parties are an opportunity for you, your students, and community groups to take a field trip to a local McDonald's restaurant to celebrate the end of Pop Tab Pandemonium and drop off your pop tabs. At the parties, RMHCA staff will be present to collect and weigh your pop tabs. You will also receive a certificate to proudly display the number of pounds of pop tabs collected by your group. We can't wait to see you there!

**Please note: Appointments to drop off your pop tabs at the Ronald McDonald House will be made available for specific purposes only. Please prepare to drop off your pop tabs at a Pop Tab Party at a participating McDonald's restaurant!**

**Dates and locations of the Pop Tab Parties:** We will determine the locations of this year's Pop Tab Parties based on the number of participating schools and community groups in specified regions all across Alabama. We plan to announce upcoming dates and locations in February 2025.

**You will receive an email with additional information about Pop Tab Parties later in the year! Stay up to date by checking our website and social media platforms as well.**







# Other Ways to Give Back

---



## **Participate in Red Shoe Run: Rockin' 5k**

Red Shoe Run: Rockin'5k is going to ROCK! Whether you're up for the 1-mile fun run, the 5K race, or prefer to be a Red Shoe Snoozer, there's something for everyone. Join us in downtown Birmingham on Saturday, April 12, 2025. For more information, visit [www.redshoerun-bham.org](http://www.redshoerun-bham.org).



## **Go RMHCA at the DMV!**

Stop by your local DMV (only in AL) and purchase an RMHCA specialty vehicle tag! For more information, visit [www.rmhca.org/specialty-vehicle-tag/](http://www.rmhca.org/specialty-vehicle-tag/).



## **Round Up for RMHC and Donation Boxes at McDonald's**

All it takes to help families stay close when they need it most is: your change. On average, the Round-Up for RMHC program raised approximately \$1.3 Million in Alabama. The Donation Box program raises tens of thousands more. Every time you visit McDonald's for a treat, ask your cashier to round your total up to the nearest dollar! Your spare change could help us raise even more for our mission!



## **Purchase a Happy Meal!**

RMHCA receives 1 penny from every purchase of a Happy Meal at participating Alabama McDonald's restaurant locations. Now that's something to be "happy" about!



## **Wish List Drive**

Host a "Wish List Drive" at your school to collect needed supplies for RMHCA! To learn more about this opportunity, visit [www.rmhca.com/wish-list](http://www.rmhca.com/wish-list).



# FAQs

---

**Q: How much does RMHCA receive from recycling pop tabs?**

**A:** Aluminum prices fluctuate, but the current price is around \$0.70/pound.

**Q: Is the pop tab worth more than the can?**

**A:** No. The tab and the can are made out of the same amount of aluminum; however, metal is recycled and priced based on weight. Tabs weigh more than cans in large quantities! Tabs are also smaller and cleaner to store and process.

**Q: Do I need to weigh the pop tabs myself?**

**A:** No. RMHCA will weigh your tabs with our scale when you drop them off at a Pop Tab Party. Only the weight calculated by RMHCA staff will be accepted for your school and group's final weight.

**Q: Where can I drop off pop tabs?**

**A:** ALL tabs must be dropped off at a Pop Tab Party. We plan to announce dates and locations in February 2025. Appointments for drop-off at the House will be accepted for specific purposes only.

**Q: Can we collect colored tabs or tabs from soup and pet food cans?**

**A:** We are only able to accept aluminum. Usually, tabs on pet foods or soup cans are made of steel. When in doubt, run a magnet over the Tab! Steel is magnetic while aluminum IS NOT.

**Q: Can my school get the RMHCA pop tab houses to collect pop tabs in?**

**A:** Due to the cost of the pop tab houses, we are unable to distribute pop tab houses to participating schools. However, we would love for your school to get creative and design your own special collection bins!



## POP TAB QUICK FACTS

---

### Weights

1,280 tabs = 1 pound

1 million tabs = 625 pounds

3.2 million tabs = 1 ton

### Measurements

1 tab = 1 inch

12 tabs = 1 foot

36 tabs = 1 yard

63,360 tabs = 1 mile

It takes **145 lbs** of pop tabs to provide one family with a 1-night stay at the Ronald McDonald House! It takes **725 lbs** of pop tabs to provide a 5-night stay for one family.





Dear Community Members,

We are excited to announce our participation in the Annual Pop Tab Pandemonium contest, hosted by Ronald McDonald House Charities of Alabama (RMHCA). Many individuals, schools, and organizations collect aluminum tabs to benefit the Ronald McDonald House. RMHCA partners with local recycling companies to receive the proceeds from the aluminum collected by many supporters. This program allows us to raise critical funds for the House and directly supports their general operating budget to impact the families they serve.

RMHCA provides a "home-away-from-home" for families while their child receives medical support in Birmingham. They offer families all the comforts of home – plus a local support network – so they can focus on their children's healing. On average, 1,000 families utilize RMHCA services per year, serving over 50,000 families since opening in 1979.

Our community's participation in the Pop Tab Pandemonium contest helps RMHCA raise valuable funds to continue providing this much-needed service for families from across Alabama, many other states, and even other countries. This fundraiser and awareness builder are proof that collecting a little tab can make a big difference in the lives of children and families. Not only are you helping a great cause, but you can also teach others about the benefits of recycling and giving back to their community. The time and energy you put into this program are very much appreciated and do not go unnoticed.

What can you do? You can help by collecting pop tabs from aluminum cans to be counted towards our total. As the contest wraps up near May 2026, the Community Award will be given to the top community group with the most pop tabs collected. They will also receive recognition on RMHCA's website and social media accounts, and more giveaways! We hope this will become a fun project for everyone to do together!

We believe this year's Pop Tab Pandemonium contest will be a great success because of your support and dedication.

If you have any questions, please contact me at [ella.portwood@rmhca.org](mailto:ella.portwood@rmhca.org) or 205-638-7269..

Sincerely,

Ella Portwood

RMHCA Communications Manager | [www.RMHCA.org](http://www.RMHCA.org)

o:205-638-7269 c:205-520-4266 | [ella.portwood@rmhca.org](mailto:ella.portwood@rmhca.org)

1700 4th Avenue South Birmingham, AL 35233-1810



Dear Parent,

Your child is collecting **pop tabs** to support Ronald McDonald House Charities of Alabama (RMHCA)! Many individuals, schools, and organizations collect aluminum tabs to benefit the Ronald McDonald House. RMHCA partners with local recycling companies to receive the proceeds from the aluminum collected by supporters like you. This initiative allows us to raise critical funds for the House and directly supports our operating budget, making a significant impact on the families we serve.

RMHCA provides a "home-away-from-home" for families while their child receives medical care in Birmingham. We offer families all the comforts of home – plus a local support network – so they can focus on their child's healing. On average, 1,000 families use RMHCA's services every year, and we've served over 50,000 families since opening in 1979.

By helping your child collect pop tabs, you're contributing to a meaningful cause. This program not only raises funds but also teaches children the importance of recycling and giving back to their community. It's a small action with a big impact on the lives of children and families facing medical challenges.

What can you do as a parent? Encourage your child to collect pop tabs from aluminum cans and support their efforts. Together, you can make this a fun, rewarding project and demonstrate the power of generosity and teamwork.

Your support is invaluable to RMHCA, and we deeply appreciate the time and energy you dedicate to this program. Every tab collected helps us continue providing vital services to families in need.

If you have any questions, please contact me [ella.portwood@rmhca.org](mailto:ella.portwood@rmhca.org) or 205-638-7269.

Sincerely,

Ella Portwood  
RMHCA Communications Manager | [www.RMHCA.org](http://www.RMHCA.org)  
o:205-638-7269 c:205-520-4266 | [ella.portwood@rmhca.org](mailto:ella.portwood@rmhca.org)  
1700 4th Avenue South Birmingham, AL 35233-1810





Dear Teacher,

Your school is participating in the Annual Pop Tab Pandemonium Contest hosted by Ronald McDonald House Charities of Alabama (RMHCA). Many individuals, schools, and organizations collect aluminum tabs to benefit the Ronald McDonald House. RMHCA partners with local recycling companies to receive the proceeds from the aluminum collected by many supporters. This program allows us to raise critical funds for the House and directly supports our general operating budget to impact the families we serve.

RMHCA provides a "home-away-from-home" for families while their child receives medical support in Birmingham. We provide families with all the comfort of home – plus a local support network – so they can focus on their children's healing. On average, 1,000 families utilize RMHCA services per year serving over 50,000 families since opening in 1979.

Your school's participation in the Pop Tab Pandemonium contest helps RMHCA raise valuable funds to continue to provide this much needed service for families from across Alabama, many other states, and even other countries. This fundraiser and awareness builder is proof that collecting a little tab can make a really big difference for the lives of children and families. Not only are you helping a great cause, but you can also teach your students about the benefits of recycling and giving back to their community. The time and energy you put into this program is very much appreciated and does not go unnoticed.

What can you as a teacher do? You can encourage your students to collect pop tabs from aluminum cans to be counted toward their school's total. As the contest wraps up near the end of the school year, the winning school will be determined by the highest number of pounds per students enrolled. The overall winner will receive a Pop Tab Pandemonium Trophy, recognition on our website and social media accounts, and more giveaways! We will have categories for elementary, middle, and high school winners, and they will also receive a plaque to display at their school. We hope this will become a fun project for you and your students to do together!

We believe this year's Pop Tab Pandemonium contest will be a great success because of your support and dedication.

If you have any questions, please contact me [ella.portwood@rmhca.org](mailto:ella.portwood@rmhca.org) or 205-638-7269..

Sincerely,

Ella Portwood

RMHCA Communications Manager | [www.RMHCA.org](http://www.RMHCA.org)

o:205-638-7269 c:205-520-4266 | [ella.portwood@rmhca.org](mailto:ella.portwood@rmhca.org)

1700 4th Avenue South Birmingham, AL 35233-1810

# Pop Tab Pandemonium



This certificate is given to

---

\_\_\_\_\_  
Number of Pounds Donated

Thank you for making a difference  
as a **Pop Tab Pandemonium**  
**Participant in 2026!**



Ronald McDonald  
House Charities®  
Alabama

*Celebrating 45 Years*